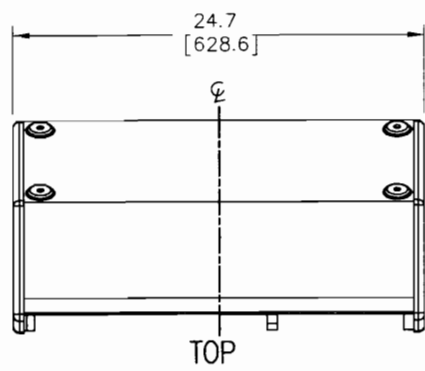


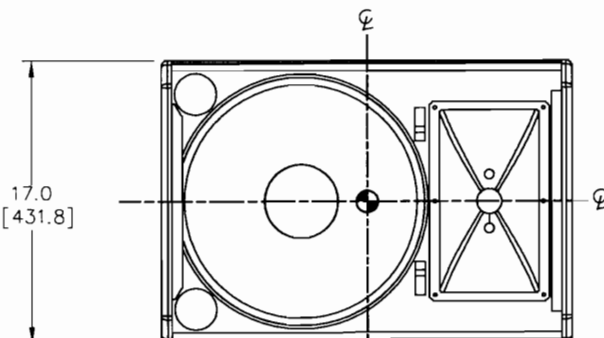
THESE DRAWINGS AND SPECIFICATIONS ARE THE PROPERTY OF JBL INCORPORATED. THEY ARE ISSUED IN STRICT CONFIDENCE AND SHALL NOT BE REPRODUCED OR USED AS THE BASIS FOR MANUFACTURE OR APPARATUS WITHOUT WRITTEN PERMISSION.

ALL MATERIAL SPECIFIED ON THIS DRAWING SHALL COMPLY WITH EUROPEAN DIRECTIVE 2002/95/EC. **RoHS**

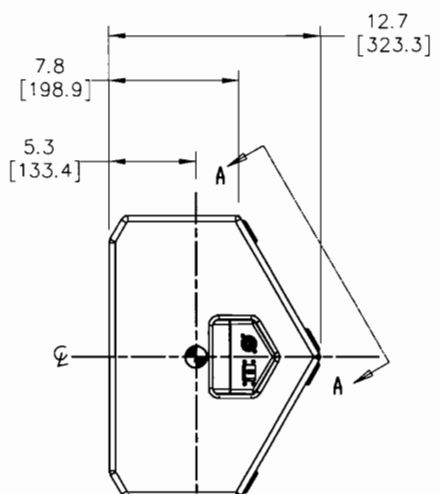
REVISIONS						
CHG	LTR	DESCRIPTION	DRFT	D.C	DATE	APPR
12361	A	RELEASE TO MARKETING	TH		11/13/20	



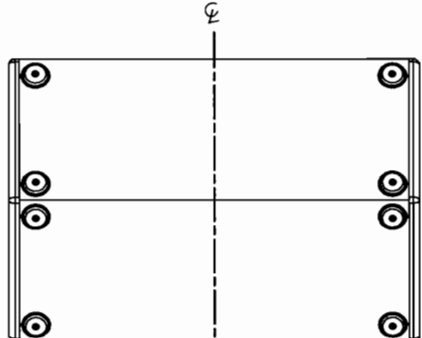
TOP



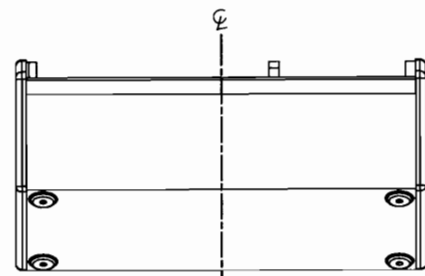
FRONT



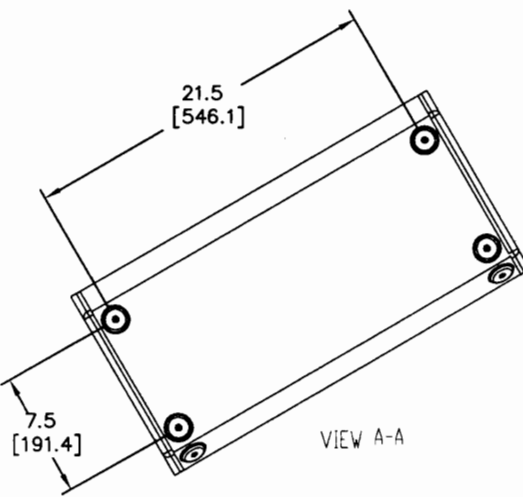
SIDES



REAR



BOTTOM



VIEW A-A

- COMPONENTS: LF - 1X 2265H
HF - 1X 2452H
- INPUT CONNECTORS: NEUTRIK SPEAKON NL-4 (X2)
ONE ON EACH END.
- GRILL: 16 GA. PERFORATED CRS, POWDER COATED
BLACK WITH CHARCOAL FOAM BACKING.
- MATERIALS: 15.9MM BIRCH PLYWOOD.
- FINISH: BLACK DURAFLEX.
- WEIGHT: 19.54 Kg (43 LBS).
- CENTER OF GRAVITY (CG)

NOTES: (UNLESS OTHERWISE SPECIFIED)

TOLERANCES (UNLESS OTHERWISE SPECIFIED)	
X.XX	± .063 INCH
X.X	± .125 INCH
ANGULAR TOLERANCE OF 0°±30°	
FRACTIONAL DIMENSIONS ± 1/32	
• DIMENSIONS ARE INCHES	
• ALL DIMENSIONS ARE FINISHED DIMENSIONS	
• DO NOT SCALE DRAWING	

JBL PROFESSIONAL A Harman International Company Northridge, California 91329 U.S.A.	
TITLE CUSTOMER DRAWING: VRX915M	
SIZE A	DRAWING NO. 1000125586
SCALE 1:1	SHEET 1 of 1